

## CONGLETON TOWN COUNCIL

### COMMITTEE REPORTS AND UPDATES

<b>COMMITTEE:</b>	Community Committee		
<b>MEETING DATE AND TIME</b>	17 July 2025 7 pm	<b>LOCATION</b>	Congleton Town Hall
<b>REPORT FROM</b>	Cathy Dean – Communities and Admin Manager		
<b>AGENDA ITEM REPORT TITLE</b>	<b>14 Speed Indication Device</b>		
<b>Background</b>	<p>The Town Council has received several requests from people wanting Speed Indication Devices (SIDs) fitted on their roads. Although Road Safety is a Cheshire East function, and speeding is a criminal offence dealt with by the Police, the requests find their way to Town and Parish Councils.</p> <p>The Town Council does not currently own any working Speed Indication Devices; those in existence in Congleton are owned by CEC. Current locations:</p> <ul style="list-style-type: none"><li>• Buxton Road – near the junction with Buxton Old Road (inbound towards Congleton Town)</li><li>• Park Lane – adjacent to 32A Park Lane (inbound towards Congleton Town)</li><li>• Newcastle Road – opposite Astbury Garage (inbound towards Congleton Town)</li><li>• Padgbury Lane – two locations, one in each direction</li><li>• Leek Road – two locations with flashing 30mph signs, one in each direction</li><li>• Leek Road (Railway Bridge) – one location with a "Slow Down" flashing sign activated when exceeding 30mph</li></ul> <p>Speed Indication Devices are effective in warning drivers about their speed and usually result in drivers slowing down.</p> <p>CO/17/2425 – Resolved to add Speed Indication Devices to a list of items being taken into Business planning and budget setting activities.</p>		
<b>Summary</b>	<p>Cllr Heather Seddon has requested a Speed Indicator Device set up on the A34 Newcastle Road by The Mount, to slow the speed of traffic along that stretch of road.</p> <p>Cllr Seddon's Cheshire East ward budget would be used to purchase the pole for the SID (around £2000). SID devices can be fitted to suitable poles, like signposts, if available in the location.</p>		



### Mobile Solar-Power SID

The only viable option is a device powered by solar, which eliminates the need for a power supply or changing/charging of batteries.

Basic data-logging is included in hardware, but cloud access or real-time reporting will come with annual fees. Essential for measuring impact and justifying continued investment. Include approx. £250–£500/year for cloud subscription, depending on provider and usage.

CEC Highways will charge £115 for a licence for the SID, and £115 for a consultation if the SID is to be relocated.

Cheshire East Speed Management Strategy (2003) states: “There is a strong preference for SIDs to be a temporary device that can be moved between locations on a regular basis, thereby they can be used over a wider area in an urban setting as a visible measure for the wider local community.”

SIDs should be placed on a relatively straight stretch of road to allow the radar device to accurately judge the speed of approaching motor vehicles. There must be a suitable post at the location to affix the sign to.

Example costings:

Roundel sign - £2,295 + VAT

Solar - £1,245 + VAT

Bluetooth data - £379 + VAT

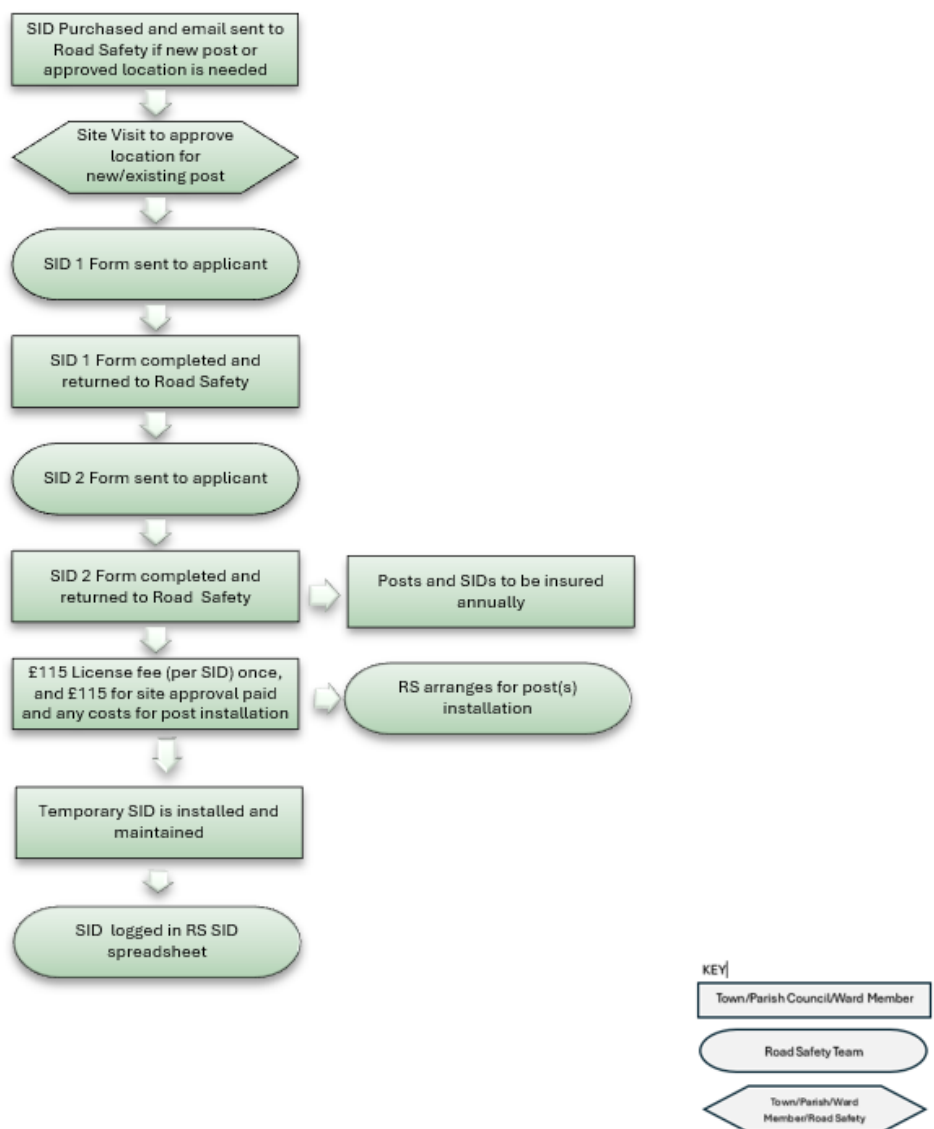
Installation - £350 +VAT

Cheshire East Licence/Assessment - £230

= £4499 + £854 VAT

It may be beneficial to identify two or three additional locations around the town where the SID could be deployed, ideally where a suitable pole is already in place. Please note that relocating the device may incur a fee if not carried out by a member of staff.

<b>Financial Implications</b>	The capital cost to purchase a SID would be between £3500-£4500, with ongoing costs of data, installation and licensing depending on relocation of the device. Currently, there is no budget for the purchase or for running costs of a device apart for an earmarked reserve of £4357 for traffic calming /Crime prevention. Our last resolution, as above, states that this needs to be discussed at business planning and budget setting.
<b>Environmental Implications</b>	Solar-powered models are ideal for the environment. They minimise maintenance and keep operating costs low.
<b>Equality and Diversity</b>	The product is aimed at reducing speeds, which has positive benefits for all sectors of our community, but especially for pedestrians and cyclists.
<b>Decision Requested</b>	Recommend the purchase of a solar-powered Speed Indicator Device (SID) with data-logging capability, within a budget range of £4,000 to £6000, and submit 3 quotes to Full Council during business planning and budget setting for approval.



Cheshire East Council's flow chart for managing Speed Indication Devices. (April 2024)