



Dane Valley Community Energy - Congleton Park

# CONGLETON COMMUNITY SOLAR

## Community Based Solar Power in Congleton and North Staffordshire



Cathy Dean



David Mason

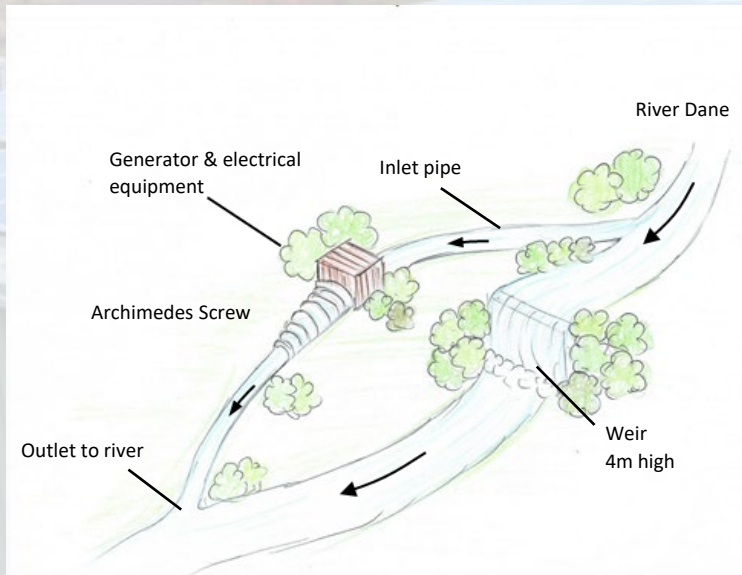


Paul Williams



# Who are DVCE-CP ?

A community benefit society registered with the Financial Conduct Authority;  
Established to develop Congleton Park Hydro and Solar green energy schemes;  
We are 'not for profit' - surplus goes to charity/environmental projects;  
Run by 39 volunteers - the team that delivered the Congleton Hydro scheme;  
Generating 330 Megawatt Hours of electricity in 20 months of operation;  
First interest and capital payment made on time and £9k donated to charity/environmental projects



Simple on paper.....

10 October, 2023



Pupils from Eaton Bank Academy presenting the project to Charles and Camilla



Havannah Weir with the installation complete



# CONGLETON COMMUNITY SOLAR

To fit 432 kilowatts of Solar Panels to the roofs of nine schools and one golf club in the Congleton and North Staffordshire area

Funded by raising in the region of £530,000 through a community share offer

## **Benefits to our Customers**

Reduce their carbon footprint (~60%)

Reduce their electricity cost (-25%)

Provide an educational resource

No initial capital outlay required

## **Benefits to our Investors**

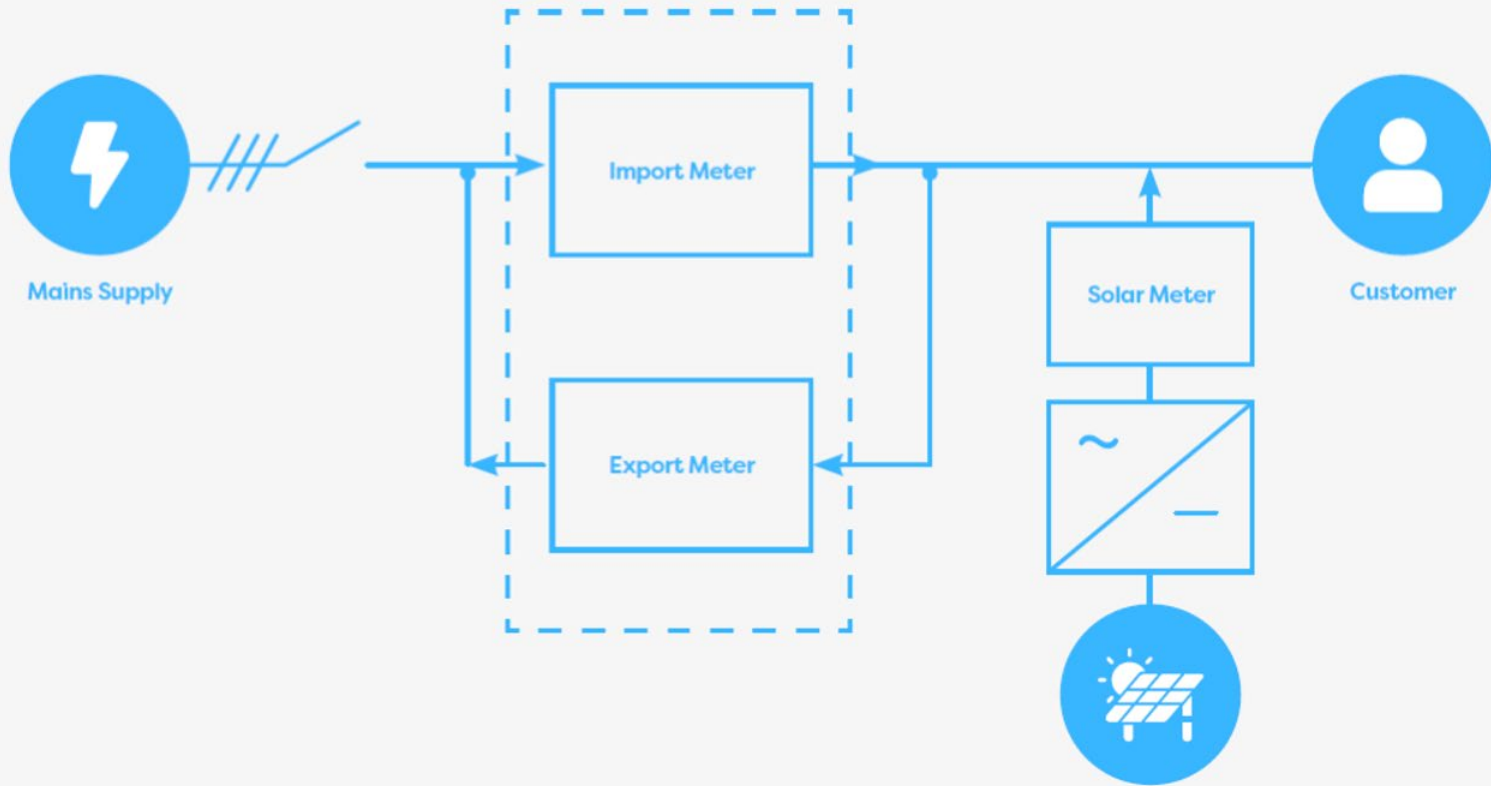
Combat climate change

Receive a good rate of interest (5%)

Capital is repaid over 15 Years

Early withdrawals are permitted

# How it all works



Customers use solar power instead of mains electricity

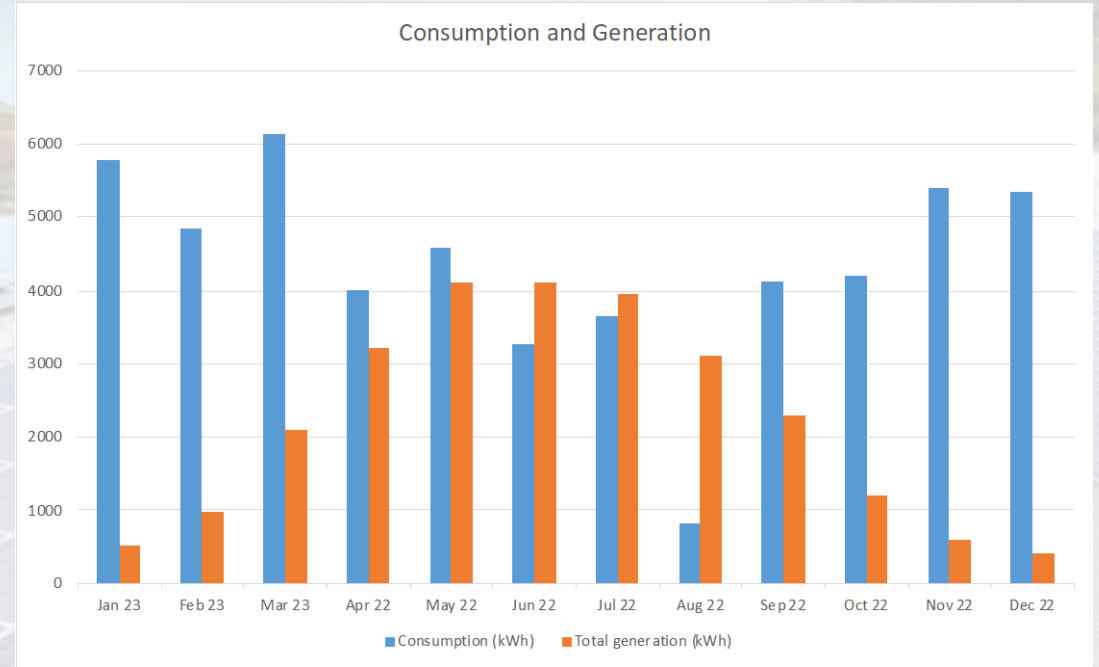
Excess solar generation is sold back to the grid

Customers use mains electricity when solar not available

DVCE-CP sell the solar power used to the customer at a 25% discount to their normal purchase rate



# An example design





Dane Valley Community Energy - Congleton Park

# Our Customers

Customers	No of Panels	Power (kWp)	CO2 Saving (t)
Astbury Golf Club	140	47	7.1
CLPT Green Lea	136	29	6.8
CLPT Hempstalls	150	50	8.5
CLPT Thursfield	157	50	8.5
CLPT James Bateman	152	50	8.5
CLPT Manor Hill	118	39	6.0
CLPT Langdale	154	50	8.5
CLPT Greenhall	106	35	5.3
CLPT Parkside	149	50	8.5
Havannah Primary School	70	32	3.5
<b>Total</b>	<b>1332</b>	<b>432</b>	<b>71.2</b>

Total electricity generated each Year - 372MWh

Amount of CO2 saved each year - Approximately 71 tonnes

All figures are approximate pending supplier connection agreements





Dane Valley Community Energy - Congleton Park

# Share Offer



The Community Shares Standard Mark is awarded By the Community Shares Unit to offers that meet National standards of good practice. For more Information about community shares, The Community Shares Standard Mark and the Community Shares Unit, go to [WWW.communityshares.org.uk](http://WWW.communityshares.org.uk)

Awarded the Community Shares Standard Mark

We are targeting a fund raising total of £530k (a minimum of £400k to a maximum of £600k)

You can invest from £100 up to £50,000 (£100,000 for institutional investors)

Closes October 31<sup>st</sup> or when fully subscribed

Our projected interest rate is 5%, with capital repayment over 15 years

You must be 16 or over

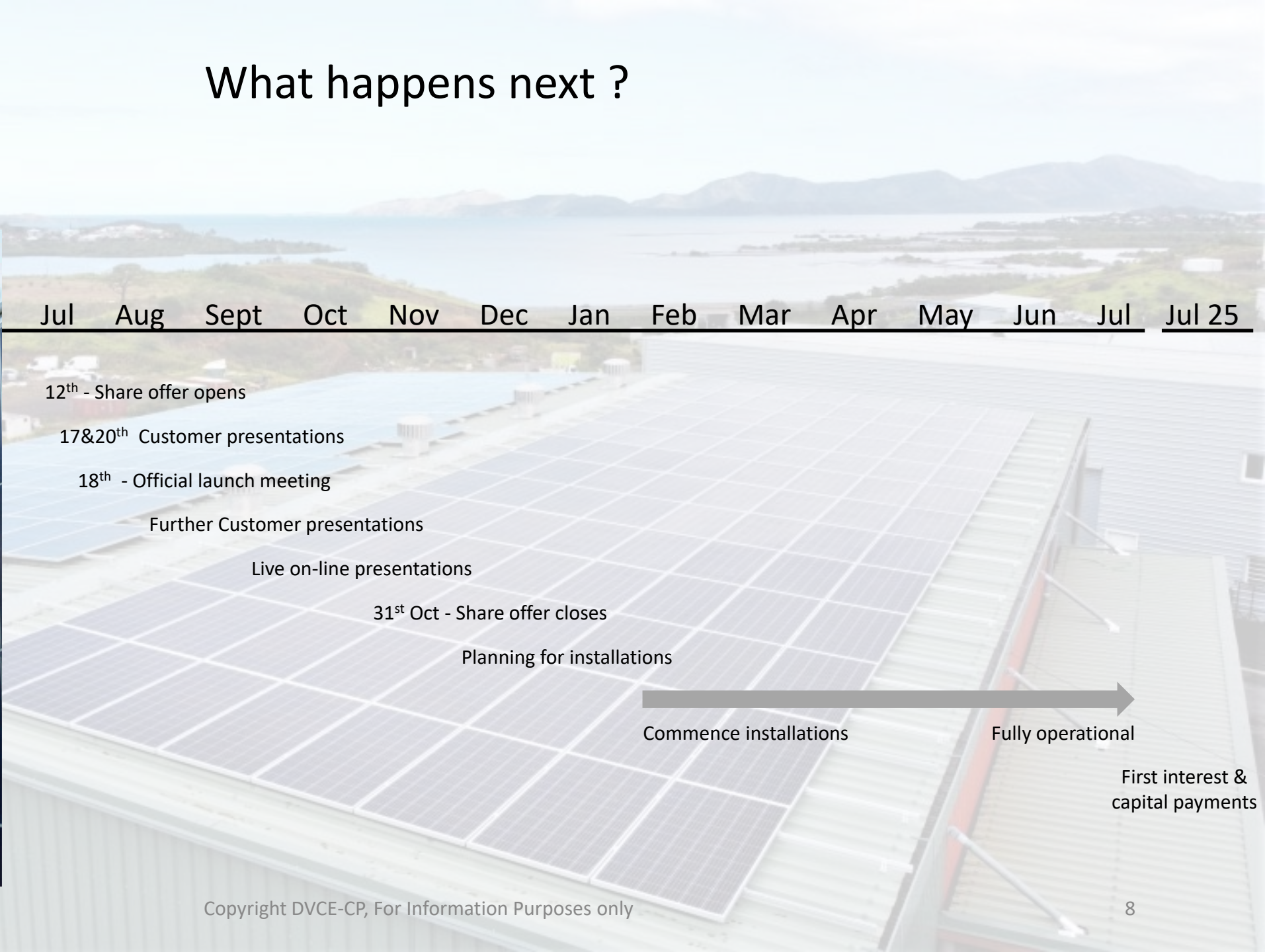
You will have 1 vote per investor / member, irrespective of the size of your investment

The Share Offer, Application Form and associated documents are available at [www.congletonsolar.co.uk](http://www.congletonsolar.co.uk)

**All investments involve a degree of risk - please consult a financial advisor in making your decision**



# What happens next ?





# Frequently asked questions

What will the money I invest be used for ?

Can you put solar panels on the roof of my house ?

Who will install and maintain the panels and systems?

Can I buy shares for someone else ?

Can I pass shares on in my will ?

Can I sell or transfer my shares?

What happens to the solar panels and related equipment at the end of the project ?



# CONGLETON COMMUNITY SOLAR

## Community Based Solar Power in Congleton and North Staffordshire



Cathy Dean



David Mason



Paul Williams



# An example design

