

## **LOWER HEATH GREEN SPACES: DRAFT BIODIVERSITY PLANS 16-19**



Wild garlic (Ramsons) in the green space off Hillfields, above Town Wood

### **GREEN SPACES INCLUDED:**

|           |                              |           |                                  |
|-----------|------------------------------|-----------|----------------------------------|
| <b>16</b> | <b>Hillfields Close</b>      | <b>18</b> | <b>Hertford Close-River Dane</b> |
| <b>17</b> | <b>Lower Heath Play Area</b> | <b>19</b> | <b>Lady Warburton's Walk</b>     |

Also see Introduction, Appendix 1 with survey plans and notes for each site, and Appendix 2 with examples and references.

# GREEN SPACE OFF HILLFIELDS CLOSE

## Site biodiversity plan 16



Green Green space off Hillfields Close, tilted aerial photo 2021

### Biodiversity aim

Development of a mosaic of grassland, orchard, hedgerow and scrub habitats which will buffer and extend Town Wood ancient semi-natural woodland, whilst retaining much of the open space for recreation.

### Site information

|                                   |                                                                                                                                                                                                             |
|-----------------------------------|-------------------------------------------------------------------------------------------------------------------------------------------------------------------------------------------------------------|
| Location                          | To the east of Hillfields Close, Lower Heath, and north of the Town Wood.                                                                                                                                   |
| Description                       | Informal open space consisting mainly of amenity grass, but visually dominated and partly overshadowed by mature woodland to the south. Includes group of trees, and section of boundary hedge.             |
| Use                               | Moderate use for recreation and as a through route from Lower Heath to Congleton Park. Together with the network of Town Wood footpaths walks link to Hertford Close, Eardley Crescent and Hillfields Close |
| Total area                        | 0.87 hectares (2.15 acres)                                                                                                                                                                                  |
| BAP Priority Habitats and Species | None identified on site, but the green space is on the edge of Town Wood Local Wildlife Site, which is UK BAP lowland mixed deciduous woodland.                                                             |
| Biodiversity evaluation           | Moderate or moderate-high (relative to other urban green spaces surveyed).<br>Trend - improving.                                                                                                            |

## Potential for biodiversity enhancement



### Note

Proposals are based on a quick habitat survey carried out in April 2022. Additional data from people who use the site, local naturalists and others would be welcomed. These initial proposals are for discussion and consultation so are liable to change.

First draft April 2022

## LOWER HEATH PLAY AREA

### Site biodiversity plan 17



Lower Heath Play Area, tilted aerial photo 2021

### Biodiversity aims

Increased habitat diversity and community involvement with benefits for wildlife, health and well-being, education and play.

### Site information

|                                    |                                                                                                          |
|------------------------------------|----------------------------------------------------------------------------------------------------------|
| Location                           | Between Lower Heath Avenue and Tidnock Avenue, Lower Heath, Congleton, CW12 2HJ, grid reference SJ861640 |
| Description                        | Amenity open space with play and football areas and through route                                        |
| Use                                | Well-used for recreation and as a through route                                                          |
| Total area                         | 0.61 hectares (1.52 acres)                                                                               |
| UK BAP Priority habitats & species | Hedgerow (mixed species hedge present though immature)                                                   |
| Biodiversity evaluation 2022       | Low. Trend - improving but some setbacks                                                                 |

## Potential for biodiversity enhancement



### Note

Proposals are based on a quick habitat survey carried out in April 2022. Additional data from people who use the site, local naturalists and others would be welcomed. These initial proposals are for discussion and consultation so are liable to change.

# HERTFORD CLOSE-RIVER DANE GREEN SPACE

## Site biodiversity plan 18



Area to the south of Hertford Close, tilted aerial photo 2021 looking north

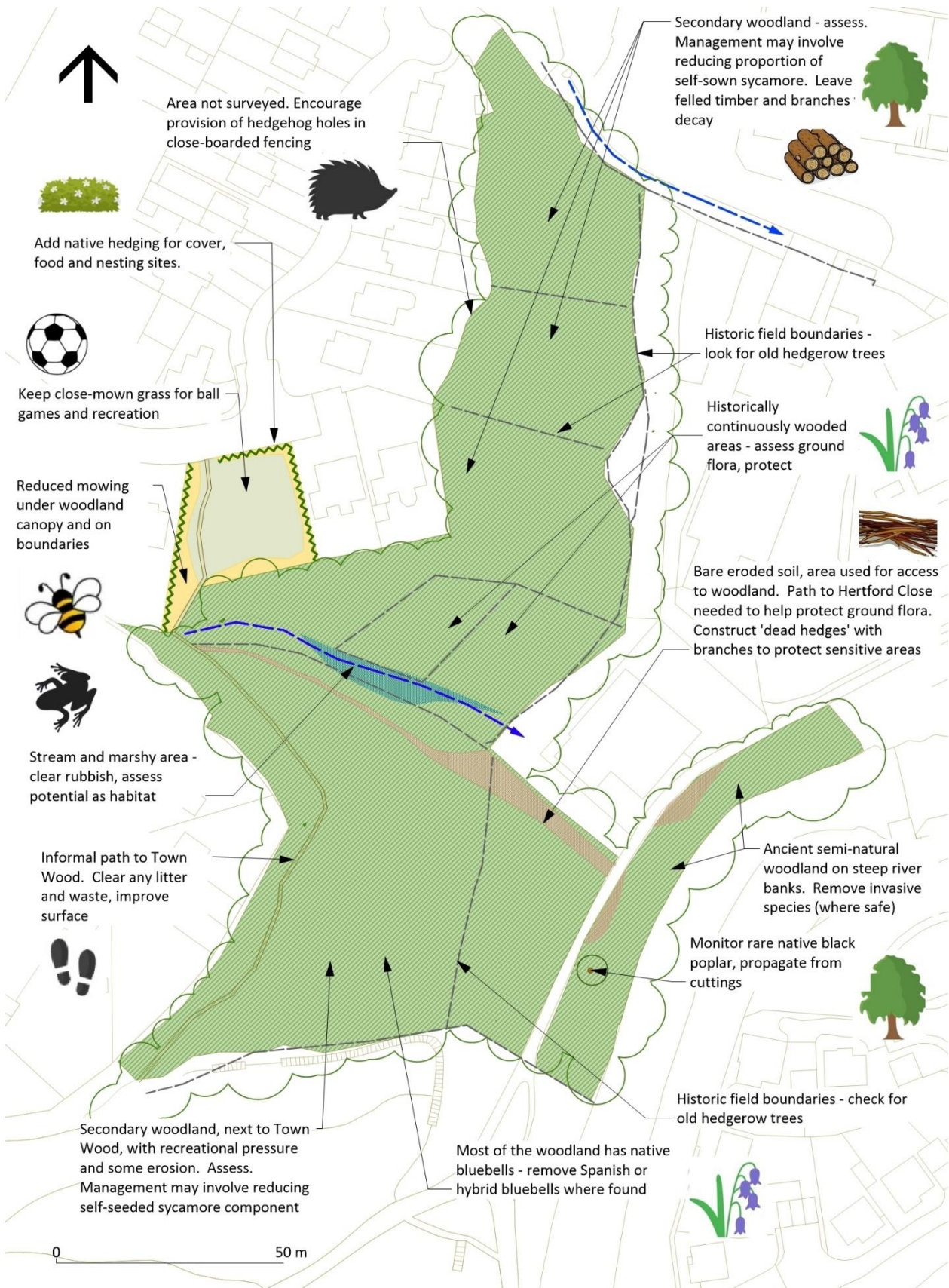
### Biodiversity aims

Restoration of valley woodlands and ancient woodland flora with improved access, through management.

### Site information

|                                   |                                                                                                                                               |
|-----------------------------------|-----------------------------------------------------------------------------------------------------------------------------------------------|
| Location                          | To the south and east of Hertford Close, Lower Heath, extending to Congleton Park, the River Dane and Eaton Bank industrial estate.           |
| Description                       | Mainly woodland with a small area of grass next to Hertford Close                                                                             |
| Use                               | Low - most of wood is difficult to access. Most use is of a narrow path at the top which leads towards the network of footpaths in Town Wood. |
| Total area                        | 1.46 hectares (3.6 acres)                                                                                                                     |
| UKBAP Priority Habitats & Species | Lowland mixed deciduous woodland, native black poplar. Further survey work required to establish habitats and species present.                |
| Biodiversity evaluation 2022      | High (relative to 30 Congleton green spaces surveyed). Trend - overall static, locally declining                                              |

## Potential for biodiversity enhancement



**Note:** Proposals are based on a quick habitat survey carried out in April 2022. Additional data from people who use the site, local naturalists and others would be welcomed. These initial proposals are for discussion and consultation so are liable to change.

# LADY WARBURTON'S WALK

## Site biodiversity plan 19



Lady Warburton's Walk, tilted aerial photo 2021

### Biodiversity aims

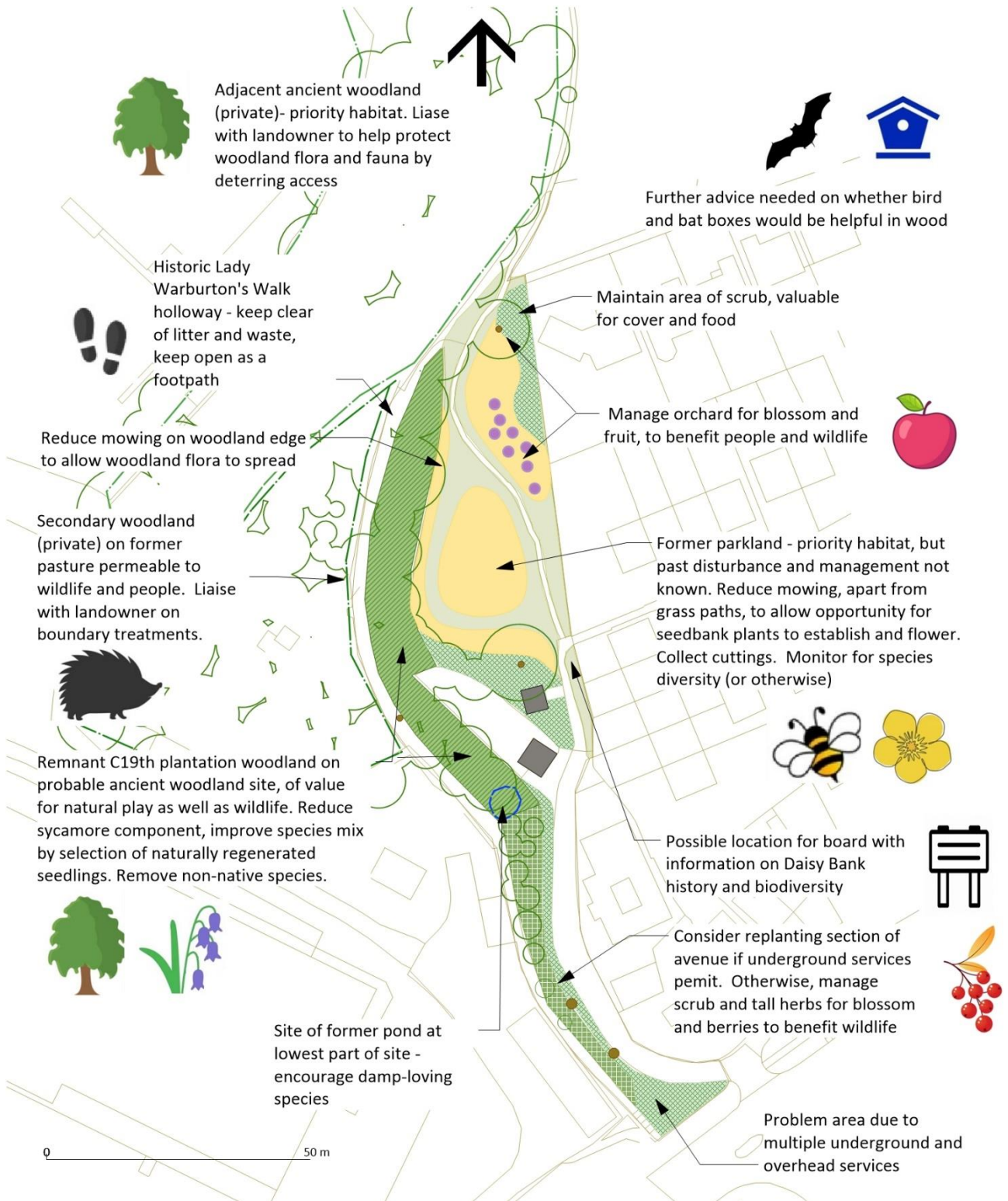
Protection and enhancement of the natural and cultural heritage of this remnant of the former Daisy Bank parkland on the edge of ancient semi-natural woodland.

### Site information

|                                   |                                                                                                                                                                                                           |
|-----------------------------------|-----------------------------------------------------------------------------------------------------------------------------------------------------------------------------------------------------------|
| Location                          | Between Rood Hill and footpath link from Somerset Close (note that ownership and ownership boundary has not been verified)                                                                                |
| Description                       | Informal linear greenspace, the western boundary following a sunken lane shown as 'Lady Warburton's Walk' on old maps which led to the former Daisy Bank Hall. The name is now used for the current path. |
| Use                               | Moderate use by local residents, including as an alternative route towards the town centre, and as part of a network of public rights of way.                                                             |
| Total area                        | 0.42 hectares (1.04 acres)                                                                                                                                                                                |
| BAP Priority Habitats and Species | Lowland mixed deciduous woodland (ancient woodland), wood pasture and parkland. A CWT Local Wildlife Site.                                                                                                |
| Biodiversity evaluation 2022      | High (relative to 30 Congleton sites assessed. Trend - static or declining                                                                                                                                |



## Potential for biodiversity enhancement



### Note

Proposals are based on a quick habitat survey carried out in April 2022. Additional data from people who use the site, local naturalists and others would be welcomed. These initial proposals are for discussion and consultation so are liable to change.