

CENTRAL GREEN SPACES: DRAFT BIODIVERSITY PLANS 10-15



Pendulous sedge on the banks of the River Dane, Hankinson's Field

GREEN SPACES INCLUDED:

10	Hankinson's Field	13	Quayside-Goldfinch Road
11	Banky Fields	14	West Road (Danesford)
12	Thames Close-Townsend Road	15	Stirling Close

Also see Introduction, Appendix 1 with survey plans and notes for each site, and Appendix 2 with examples and references.

HANKINSON'S FIELD GREEN SPACE

Site biodiversity plan 10



Hankinson's Field, tilted aerial photo 2021

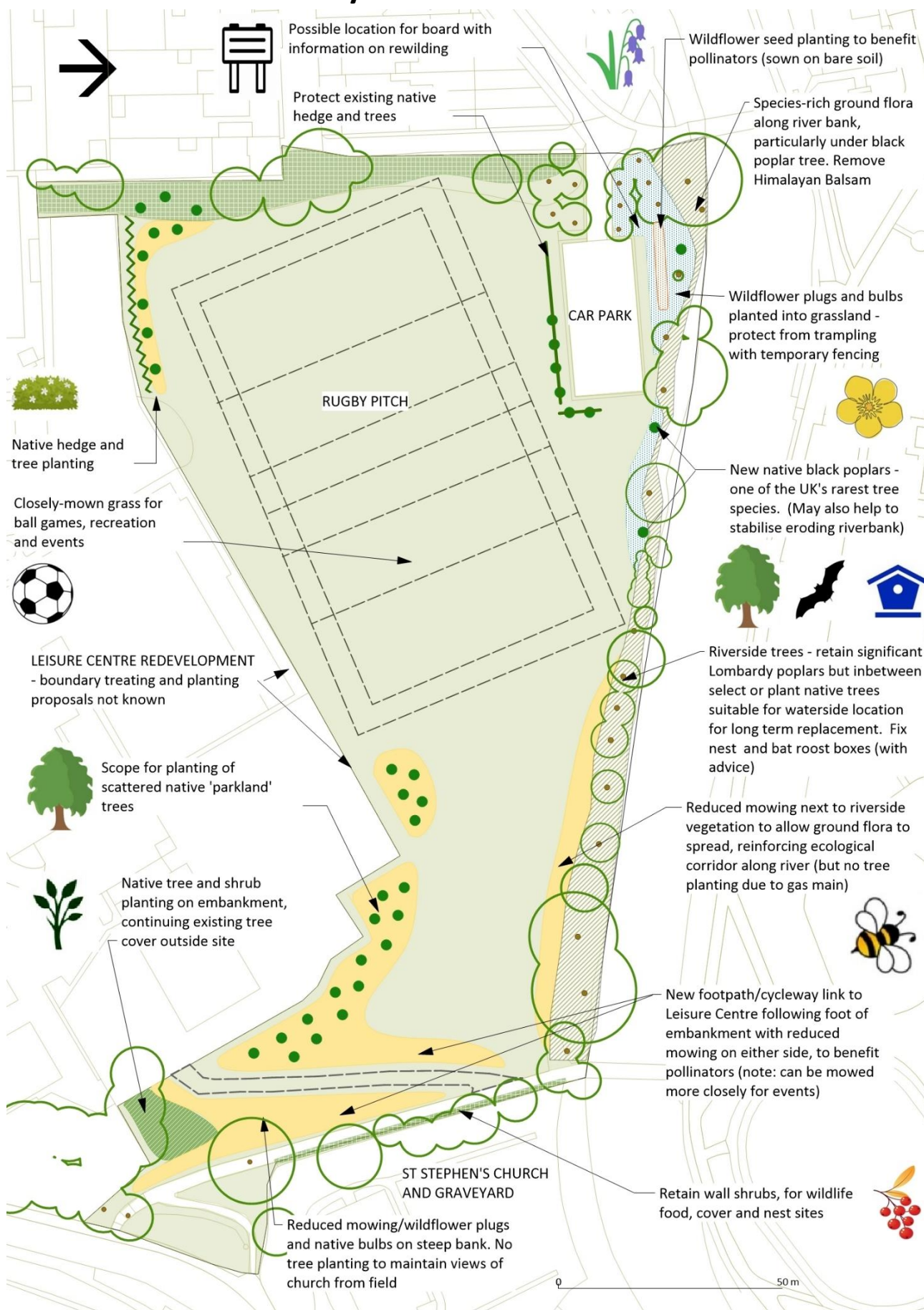
Biodiversity aims

Increased natural character of the river corridor and the floodplain location of Hankinson's Field, whilst retaining recreational value and use as a venue for large events.

Site information

Location	To the south of the River Dane and Congleton Park, north of Congleton Leisure Centre, and west of St Stephen's church and churchyard.
Description	Playing field with line of trees along the edge of the River Dane, enclosed by a small embankment to the west, a larger, partly wooded embankment to the south east, and Congleton Leisure Centre, currently undergoing redevelopment
Use	Informal recreation, ball games, rugby, circular walks from Congleton Park, large events. In association with the Leisure Centre and Congleton Park it is part of a recreational hub for Congleton. The car park is very well used
Total area	2.09 hectares (approximate, as the Leisure Centre has a temporary boundary)
UKBAP Priority Habitats & Species	None, apart from native Black Poplar (recently planted), hedgerow (recently planted). Further survey of waterside area needed.
Biodiversity evaluation 2022	Low, apart from the narrow strip immediately next to the river. Trend - improving

Potential for biodiversity enhancement



Note: Proposals are based on a quick habitat survey carried out in April 2022. Additional data from people who use the site, local naturalists and others would be welcomed. These initial proposals are for discussion and consultation so are liable to change.

BANKY FIELDS GREEN SPACE

Site biodiversity plan 11



Banky Fields green space, tilted aerial photo 2021

Biodiversity aims

Protection, enhancement and regeneration of existing features of ecological value and addition of new habitats, also benefitting amenity.

Site information

Location	West of Banky Fields and Banky Fields Crescent, Congleton
Description	Informal amenity open space next to country park, with historic field boundary hedge and former hedgerow trees
Use	Moderate use by local residents and walkers as the site is a hub on the PROW network and gives access to Astbury Mere Country Park. Some use for play.
Total area	0.76 hectares (1.88 acres)
BAP Priority Habitats and Species	Hedgerow - partly defunct. Further surveys may identify species of interest such as bats. Will be used by protected species within the country park, a Local Wildlife Site .
Biodiversity evaluation 2022	Moderate or moderate-high (initial assessment, relative to 30 Congleton sites surveyed). Excellent green infrastructure links. Trend - improving. This is one of Congleton Town Council's rewilding sites.

Potential for biodiversity enhancement



Note

Proposals are based on a quick habitat survey carried out in April 2022. Additional data from people who use the site, local naturalists and others would be welcomed. These initial proposals are for discussion and consultation so are liable to change.

THAMES CLOSE-TOWNSEND ROAD GREEN SPACE

Site biodiversity plan 12



Thames Close-Townsend Road green space, tilted aerial photo 2021

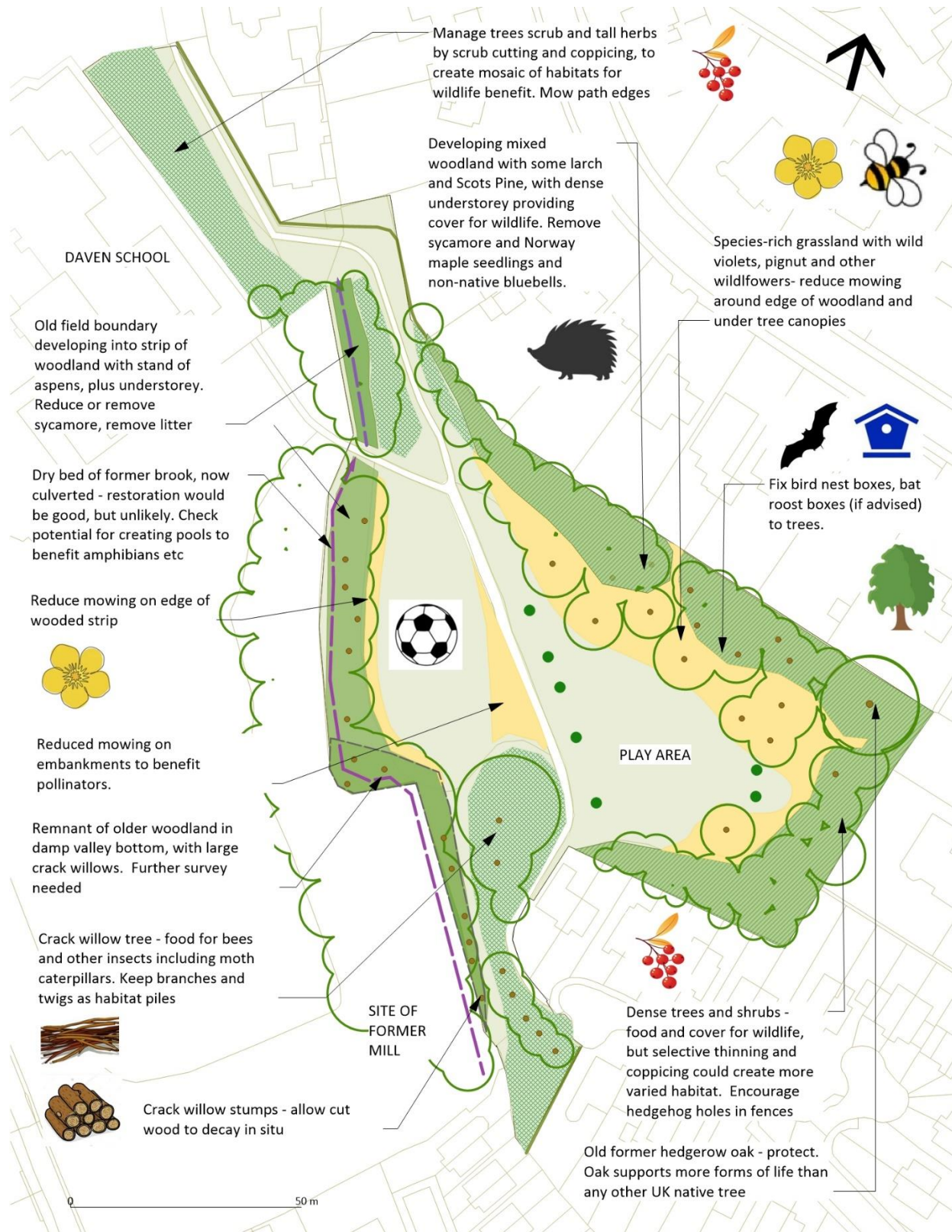
Biodiversity aims

Enhancement of natural and historic valley features and management of existing woodland, grassland and scrub for increased wildlife benefit whilst retaining value as a play area and neighbourhood park.

Site information

Location	Between Thames Close and Townsend Road, south west of Congleton town centre, and next to Daven Primary School.
Description	Informal amenity green space and play area, located in a small sheltered valley and enclosed by mature trees and shrubs
Total area	1.2 hectares (3 acres)
Use	Used for play and informal recreation, also as a through route to the town centre
UK BAP Priority Habitats & Species	Lowland mixed deciduous woodland (most is plantation but very small area in south west is older). Potential for priority species - further information needed.
Biodiversity evaluation 2022	Initial assessment moderate-high (relative to 30 Congleton green spaces surveyed)

Potential for biodiversity enhancement



Note

Proposals are based on a quick habitat survey carried out in April 2022. Additional data from people who use the site, local naturalists and others would be welcomed. These initial proposals are for discussion and consultation so are liable to change.

QUAYSIDE-GOLDFINCH CLOSE GREEN SPACE

Site biodiversity plan 13



Quayside/St Peter's Road-Goldfinch Close, tilted aerial photo 2021

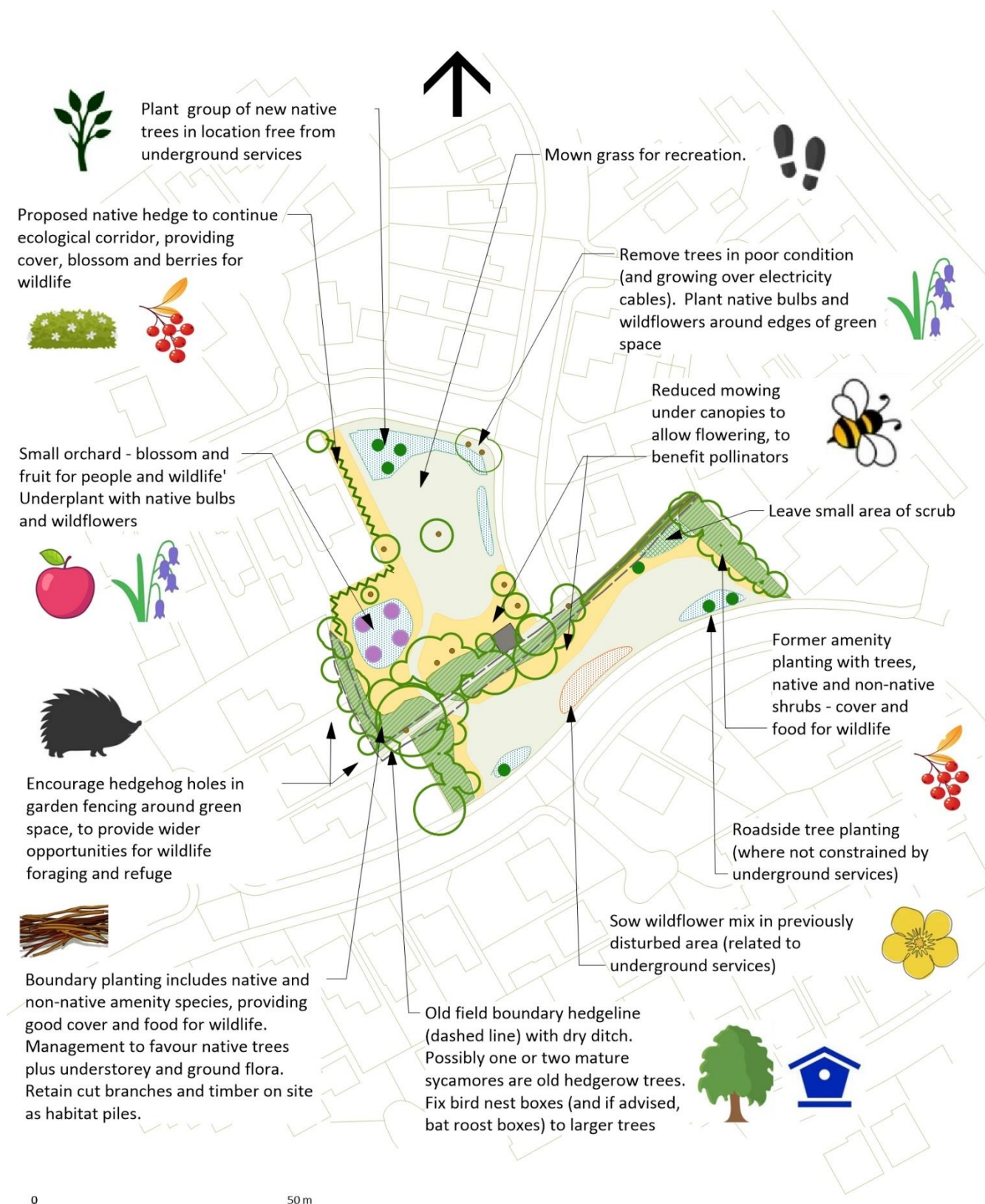
Biodiversity aims

Establishment of wildflowers and bulbs along roadsides and around areas of existing trees and shrubs which would benefit pollinators, provide visual interest, and create a small-scale green network which takes into account existing constraints.

Site information

Location	Between Quayside/St Peter's Road and Goldfinch Close, Congleton
Description	Two small areas of informal amenity green space linked by a central area of trees and shrubs and an almost hidden footpath.
Use	Used by local residents, including as a route between cul-de-sacs.
Total area	0.3 hectares (0.75 acres)
UKBAP Priority Habitats & Species	Hedgerow (remnant of former field boundary)
Biodiversity evaluation 2022	Low-moderate (relative to 30 Congleton green spaces surveyed). Lack of connectivity with other green spaces or gardens. Trend - static

Potential for biodiversity enhancement



Note

Proposals are based on a quick habitat survey carried out in April 2022. Additional data from people who use the site, local naturalists and others would be welcomed. These initial proposals are for discussion and consultation so are liable to change.

First draft April 2022

WEST ROAD (DANESFORD) GREEN SPACES

Site biodiversity plan 14



Road (Danesford) frontage, tilted aerial photo 2021

Biodiversity aims

Increase biodiversity value of remnants of country house landscape.

Site information

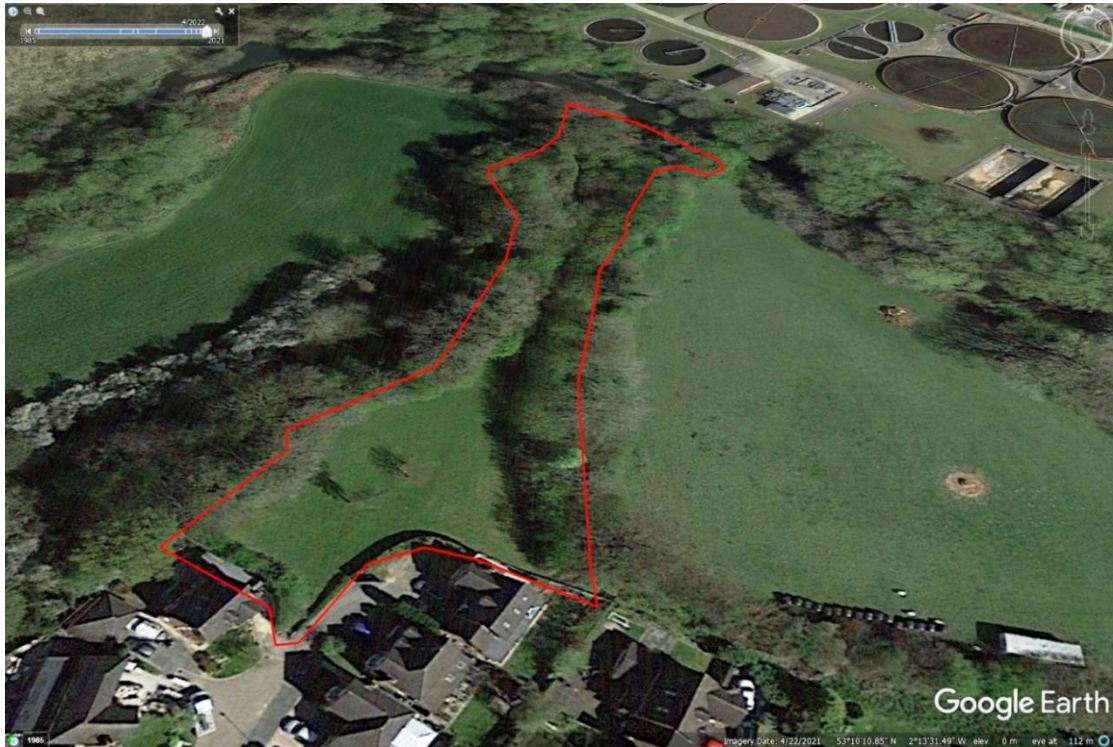
Location	On the north side of West Road, and off Obelisk Way and Valley View, west central Congleton
Description	Semi-formal amenity open spaces including some significant old trees
Use	Moderately high use by local residents and those avoiding busy West Road when walking between West Heath and the town centre.
Total area	0.69 hectares (1.7 acres)
BAP Priority Habitats and Species	None identified, but further survey by specialists may find species of interest.
Biodiversity evaluation 2022	Moderate (relative to 30 Congleton sites surveyed). Value reduced by fragmentation due to development - linkage with Dane Valley now limited. Dense planting and mature trees are assets. Current trend - static, with some potential for improvement.

Potential for biodiversity enhancement



STIRLING CLOSE GREEN SPACE

Site biodiversity plan 15



Stirling Close green space, tilted aerial photo 2021 looking north

Biodiversity aims

Active management of meadow, scrub and hedgerows to increase value of green space, already set up as a nature reserve, for biodiversity and people.

Site information

Location	Off Stirling Close, Congleton
Description	Linear ridge of land projecting into River Dane floodplain, and overlooking the river at its northern end. The informal green space is enclosed and shaded by trees and overgrown hedges. Local nature reserve (named Stirling Close Conservation Area).
Use	Southern area used by local residents. Northern area - use limited by overgrown hedges and scrub. No through route, although informal access to river for fishing.
Total area	0.55 hectares (1.35 acres)
UK BAP Priority Habitats & Species	Hedgerows and old hedgerow trees. Next to deciduous woodland (with some ancient semi-natural woodland indicator species). Site likely to be used by protected species - Pipistrelle bats have previously been identified. Further surveys needed. One of Congleton Town Council's rewilding sites since 2021.
Biodiversity evaluation 2022	Moderate-high (relative to 30 Congleton green spaces surveyed). Trend - declining in terms of original objectives. Aims of management need to be reviewed.

Potential for biodiversity enhancement



Note

Proposals are based on a quick habitat survey carried out in April 2022. Additional data from people who use the site, local naturalists and others would be welcomed. These initial proposals are for discussion and consultation so are liable to change.